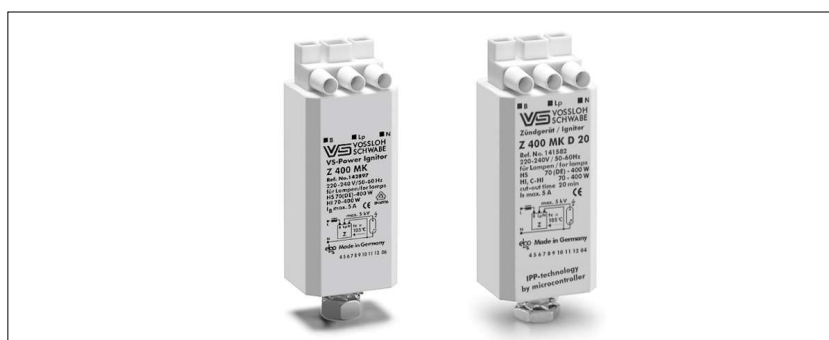
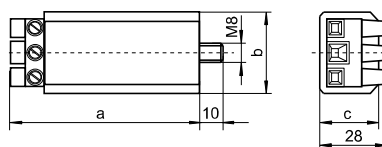


Electronic Superimposed Ignitors for HS Lamps 70 (DE) to 400 W and HI Lamps 35 to 400 W

Standard version or with automatic switch-off
Compact shape
For high pressure sodium lamps (HS),
metal halide lamps (HI) and
ceramic discharge lamps (C-HI)
Ignition voltage: 3.0-5.0
Phasing of the ignition voltage:
60-90 °el and 240-270 °el
Max. permitted casing temperature: 105 °C
Fastening: male nipple with pre-assembled
washer and nut
For luminaires of protection class I and II



PC casing – K and K D20



Type	Ref. No.	Voltage AC 50-60 Hz V	Max. lamp current A	Internal loss W	Inherent heating K	Ignition voltage kV	Load capacity pF	Switch-off time sec./Hz	Casing d (Ø) mm	a mm	b mm	c mm	Weight g
Z 400 M K	141624	220-240	4.5	< 1.8	< 20	3-5	20-100	—	—	78	34	27	130
Z 400 M K D20	141626	220-240	4.5	< 1.8	< 20	3-5	20-100	300/50-60	—	78	34	27	145

Plastic casing (PC) with screw terminals: 0.75-2.5 mm²

Recommended for outdoor lighting
** Not suitable for C-HI lamps